



UPS Power Management and Rack-Mount Accessories

APC accessories increase systems availability and UPS control for a secure, managed network environment



Contents

Section I: UPS Management Peripherals

4

Power Management Accessories

Web/SNMP Management Card
2-Port Interface Expander Card
8-Port Interface Expander (Share-UPS)
Out-of-Band Management Card
Environmental Monitoring Card
Relay I/O Card

Provides standards-based management of APC UPSs
Enables safe shutdown of multiple operating systems
Enables safe shutdown of multiple operating systems
Provides management of UPSs via modem
Enables monitoring of environmental conditions surrounding the UPS
Enables management of UPS through a dry-contact interface

Other Enhancements

5-port 10Base-T Hub Card
Expansion Chassis
Triple Expansion Chassis
PowerView™
Remote Power-off device
Isolated Serial Extension Cable

Provides network hub ports in the UPS
Provides one additional management slot for APC UPSs
Provides three additional management slots for APC UPSs
Hand-held configuration and control of APC UPSs
Enables immediate turn-off of UPS output power
Enables serial UPS communication over long distances

Section II: Power Control and Distribution

10

MasterSwitch™
MasterSwitch Vertical Mount
MasterSwitch Power Receptacles
Power Distribution Units

Remote reboot and power control
Remote reboot, power control, 16 outlet vertical mounting
Increase Amp capabilities of any MasterSwitch
Increased distribution of power

Section III: NetShelter Enclosures and Accessories

12

NetShelter® Premium
NetShelter High Density Enclosure
NetShelter Configurator Software
NetShelter Standard
Enclosure Accessories

Premium enclosure with glass front door
Premium enclosure with fully vented front doors
Helps plan installation of rack-mount equipment
Cost effective, high-quality enclosure solution
Premium enclosure accessories providing organisation, protection, and additional stabilisation

Section IV: NetShelter Racks and Accessories

18

2-Post Racks
4-Post Racks
NetShelter Rack Accessories
KVM Switch and Cables

2-post open frame rack
4-post open frame rack
Quality accessories providing organisation and stabilisation
Manage multiple servers with a single keyboard, monitor and mouse

Section V: Specification Tables

21

Increase your systems availability with accessories from APC

An APC uninterruptible power supply (UPS) provides superior power protection to all attached network devices such as servers, gateways, hubs and routers. The increased demand for power protection, including a method which allows users to proactively manage, organise and protect their devices, is paramount in today's society. Administrators require the highest amount of availability (up-time) possible from their networks and have zero tolerance for downtime. APC's line of accessories provides administrators with the ability to manage networks by reducing hardware and software corruption while creating greater efficiencies of their systems' devices. APC works hard to ensure that our customers have the right solution for their application needs.



Fred Hutchinson Cancer Research Centre

"We knew we wanted to continue with APC, but as we began the upgrade, we had to go through the bidding process and we looked at a lot of manufacturers and a lot of servers. As we were comparing, we found that APC fit with every vendor we evaluated. And of all the vendors, APC was the easiest to install. Their new cabinets have a wonderful, durable design and they fit our needs to a 'T'. This year we've gone through a complete infrastructure upgrade, and we've installed 50 APC NetShelters® and 50 APC Smart-UPS® systems."

*Wayne Deckman, Network Specialist,
Fred Hutchinson Cancer Research Centre*



Cambridge Technology Partners

"To protect our systems, we have four APC Symmetra™ Power Arrays™ protecting all of our production servers: four Sun servers running Solaris with an Oracle database, an HP K100 running HPUX, and six HP NetServers running NT. We also use APC's PowerNet® SNMP Adapter for power monitoring and control. And in some of our remote offices, APC UPSs protect production and mail servers to ensure 100 percent uptime."

*Tony Castellano, IT Manager, Enterprise Applications,
Cambridge Technology Partners*

UPS Management

Web/SNMP Management Card



Part Number AP9606 - Web/SNMP Management Card 10 Base-T Ethernet
Part Number AP9603 - SNMP Management Card Token Ring

UPS network interface card for network administrators that provides standards-based management of UPSs in rack, computer room and datacentre environments.

The presence of the Internet makes the proper function of networking hardware critical to the success of an enterprise network. When a power-related event causes a router to reboot, hundreds of users can lose connectivity with the rest of the network. This loss diminishes the profitability of a business. Therefore, a key requirement for administrators today is to keep network equipment highly available through proper power protection.

Flexible and convenient power management capabilities are essential to ensure high availability of mission-critical networking equipment such as servers, routers, switches and hubs. The APC Web/SNMP Management Card has an integrated embedded Web server on-board. This feature enables full management of UPSs protecting networking equipment from power-related events using a standard Web browser. The Web/SNMP Management Card reaffirms APC's leadership and commitment to Web-based and SNMP power management systems.

Features include:

- Connection of APC Smart-UPS, Matrix-UPS®, or Symmetra™ Power Array™ to the network in a 10Base-T environment. The network administrator now has the ability to fully manage and control the UPS through open industry standards like HTTP (standard Web browser), Telnet, or SNMP.
- Integration with industry leading SNMP-based management platforms like CA Unicentre TNG, Cabletron Spectrum, HP OpenView, SunNet Manager, and Tivoli Management Environment.
- Lowers cost of ownership by allowing remote mass configurations over the network, thus reducing the time and cost of installation during a mass rollout of Web/SNMP Management Cards.
- Event logging and e-mail notification upon unfavorable events.

2-Port Interface Expander Card



Part Number AP9607

UPS card for network administrators that provides safe system shutdown for multiple Operating Systems (OSs) in rack, computer room and datacentre environments.

Essential for multi-server monitoring of a single UPS, especially in a mixed OS environment, the 2-port Interface Expander Card easily integrates with APC Smart-UPS, Matrix-UPS or Symmetra Power Array to provide graceful shutdown during power anomalies.

Features include:

- Allows multiple servers running various operating systems to monitor one UPS*.
- Each server can be configured to shut down independently during extended power outages.
- Provides two additional serial interface dry contact ports for simple signalling.
- Each server runs its own copy of PowerChute® *plus* software for monitoring and power management of the UPS.
- Dip switch controls on front of adapter provide flexibility in selecting proper monitoring and management functions.

* Important note: Monitoring cables must be ordered separately. See chart on p.19 or go to www.apcc.com/products/accessories/cable_kits.cfm for details.

8-Port Interface Expander (Share-UPS™)



** Important note: Monitoring cables must be ordered separately. See chart on p.19 or go to www.apcc.com/products/accessories/cable_kits.cfm for details.*

UPS peripheral for network administrators of multiple OSs providing safe shutdown in rack, computer room environments.

- Connect up to eight completely OS-independent servers (29 servers with 4 Share-UPS) to monitor and manage a single UPS.*
- When power fails, Share-UPS provides notification (via APC software or SNMP) of power problems and signals each server to initiate graceful shutdown; upon shutdown, Share-UPS employs the UPS battery conservation mode and manages reboot when power returns.

Features include:

- Provides multiple modes (confirmed, timer, and low battery) enhance safety and flexibility in managing shutdown, battery conservation and reboot.
- Local, hard-wired serial connections available through Share-UPS are much more reliable than network connections for critical management communications.

Central UPS management

- Use one server to manage the power environment for servers with multiple OSs.
- Running APC PowerChute *plus* on the primary server provides superior power management and UPS diagnostics for all equipment connected to the UPS.
- Use with Web/SNMP Management Card to manage the power environment of up to 8 servers.
- Leverages the modularity and diagnostics of APC Matrix-UPS and Symmetra Power Array.

Out-of-band management via modem

- Communicate with and control your UPS remotely using an external modem.
- Reboot "locked-up" systems, determine UPS status and diagnose power problems even when your LAN is down.

Out-of-Band Management Card



** Important note: Requires a user-supplied modem. The Out-of-Band Management card can share a single phone line with an existing computer/modem connection, but still requires a dedicated modem.*

UPS card for network administrators to manage UPSs remotely via modem throughout the network.

The Out-of-Band Management Card remotely manages your APC UPS. The card provides access to detailed UPS information, paging upon power events, and remote safe reboot of attached equipment via a user-supplied modem. Users have the ability to communicate with the UPS even during power outages or when the server is down via a dial-up connection. The Out-of-Band Management Card also puts you in control of the power environment at remote sites via serial or modem link.

Features include:

- Extensive UPS status information and UPS control via modem/terminal link.
- Detailed power information; UPS status and environmental conditions (using Environmental Monitoring Card accessory) can be accessed easily and remotely.
- UPS tests, card configuration and establishment of UPS internal parameters remotely.
- Extensive capabilities to reboot locked-up devices safely and easily, without having to travel to the site.
- Power event log and on-line data logging capabilities allow easy remote troubleshooting.
- Availability to dial two (2) pagers to alert you about potential problems and UPS events at specific sites.
- Fully configurable paging to allow the choice of who gets paged for which conditions.
- User-selectable password protection.
- Dial-back security option provided.

Environmental Monitoring Card



Part Number AP9612TH (Temperature and Humidity)

UPS card for network administrators to monitor environmental conditions in rack, computer room, and datacentre environments.

Environmental monitoring

The Environmental Monitoring Card will remotely monitor temperature, humidity and other environmental conditions via PowerChute *plus*, the Out-of-Band Management Card, the Web/SNMP Management Card, SNMP Agents or PowerView.

Features include:

- External probes for temperature and humidity continuously monitor the environment of your valuable equipment.
- A remote probe that allows you to monitor the environment up to 12' (366cm) from the UPS or from the Environmental Monitoring Card.
- Compatibility with closed/open loop sensors.
- Contacts are accompanied by a 12V DC power source, allowing more flexibility in sensor options.
- APC PowerChute *plus* software provides a graphical user interface as well as administrator notification of environmental problems. The FlexEvents feature in PowerChute *plus* allows Environmental Monitoring Card information to trigger a number of user-defined events, including paging, event logging and safe system shutdown.
- User-selectable thresholds that allow you to decide when you need to be notified of potential environmental problems to prevent damage to system components.
- Availability to work in conjunction with APC SNMP Agents, the Web/SNMP Management Card with PowerView and the Out-of-Band Management Card for network, as well as modem-based, communication of system environmental conditions.

Relay I/O Card



Part Number AP9610

UPS card for network administrators to control and monitor power through a dry contact interface in rack, computer room, and datacentre environments.

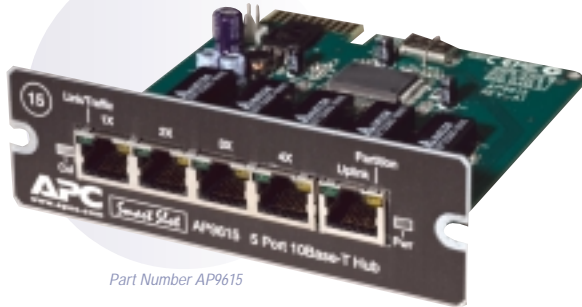
Dry contact management for telecom and alarm-type systems

The Relay I/O Card allows you to control and monitor power through a simple dry-contact interface, a communication format common in PBXs, telecom, and alarm management systems. The Card easily installs in your APC Smart-UPS, Matrix-UPS, or Symmetra Power Array system and fully integrates with your telecom and dry contact equipment.

Features include:

- Allows you to remotely monitor the UPS battery and operation when the power goes out. This monitoring is critical to maintaining remote site availability.
- Gives you the ability to remotely start up or stop equipment via four input and output relay contacts.
- Can remotely reboot locked-up or unstable devices, saving you time and the added expense of a field service call.

5-Port 10Base-T Hub™



Part Number AP9615

UPS card for network administrators to provide additional network ports in server, rack, computer room, and datacentre environments.

Power protected hub

APC's 5-Port 10Base-T Hub is a complete power-protected hub designed to fully integrate with any card-slot equipped Smart-UPS, Matrix-UPS, or Symmetra Power Array. The 5-Port 10Base-T Hub adds value to your network by allowing additional network users to connect via the ports, thus reducing overall costs without compromising valuable office or rack space.

Features include:

- Equipped with four RJ-45 station ports and one RJ-45 Uplink Port for attaching to the network.
- Completely powered and backed up by the UPS in which it resides eliminating any unnecessary network downtime.
- Fully compliant with the IEEE 802.3 10 Base-T industry standard.
- Seamlessly fits into any card-slot equipped bay found on the back of the UPS.

Expansion Chassis



Part Number AP9600

UPS card chassis for network administrators that provides one additional management slot for Smart-UPS, Matrix-UPS, Symmetra Power Array, and Silcon UPSs.

APC's Expansion Chassis provides a solution for an environment that requires the integration of an additional accessory. Setup and operation is as simple as connecting the cable of the Expansion Chassis to the serial port on the back of the UPS and connecting an additional accessory to the housing in the back of the Expansion Chassis. Integrate any one of the following: 2-Port Interface Expander Card, Share-UPS 8-Port Interface Expander, the Environmental Monitoring Card, and communications capabilities (Out-of-Band Management Card, Relay I/O Card, Web/SNMP Management Card) in one convenient device.

Features include:

- Provides integration of additional APC accessory card.

I. UPS Management

Triple Expansion Chassis™



Part Number AP9604

UPS card chassis for network administrators that provides three additional management slots for Smart-UPS, Matrix-UPS, Symmetra Power Array, and Silcon UPSs.

The Triple Expansion Chassis is an external expansion chassis designed to accommodate any three APC accessory cards simultaneously. The Triple Expansion Chassis is ideal for use with APC UPSs that require additional bays for management accessories.

Features include:

- Enables simultaneous monitoring and management via multiple (up to 3) cards for increased manageability of your network UPS.
- Designed for use in a stand-alone or rack-mount environment, requiring only 1U of space.
- Supplied with rack-mountable hardware and UPS connection cable.

PowerView™



Part Number AP9215

Hand-held control panel for network administrators that configures and controls UPSs in rack, computer room, and datacentre environments.

The PowerView UPS Management Display is a hand-held control panel that provides full control and local monitoring of the connected UPS. A key benefit of this product is its ability to learn configurations at a UPS and download to other units. This allows for time and cost savings when setting up data centres and server rooms. With monitoring and control parameters such as input voltage, level of redundancy, and temperature and humidity, the display helps manage APC Smart-UPS, Matrix-UPS, and Symmetra Power Array from a monitoring station up to 15' (430cm) away.

Features include:

The operation of the display is divided into six functional areas, each accessible through an item in the top-level menu:

UPS status, setup and control—Multi-language—Backlight—Control/status of accessories—Diagnostics—Event logging—Configuration of the display—Configuration copy and download

Fingertip LED indicators

Four LED indicators across the upper face of the display show the operational status of the connected UPS:

- LOAD ON—Green indicates that the UPS is supplying power to the load (electrical device).
- ON BATTERY—Yellow indicates that power to the attached load is being supplied by the UPS batteries.
- BYPASS—Yellow indicates that power to the load is being supplied directly from the power utility. The UPS has been effectively removed from the circuit (Matrix-UPS and Symmetra models only).
- FAULT—Red indicates that the UPS has detected an internal fault condition.

Remote Power-off Device



Part Number AP9830

Remote power-off switch for network administrators that immediately turns off the output of an APC UPS in computer room and datacentre environments.

APC's Remote Power-off (RPO) Device is designed to assist network managers in emergency situations where power may need to be abruptly discontinued. The RPO consists of a cable adapter that easily attaches to an APC UPS and to an emergency power off (EPO) system. The adapter supports both contact closure (normally-open or normally-closed contacts) and isolated 24-volt EPO interface. The RPO also allows for pass-through of smart and simple UPS signalling. An APC Remote Power-off Device is the right product to prevent electrical shock in the event of smoke, fire or water damage in your datacentre or server room.

Features include:

- Provides a way to turn off the UPS quickly in case of fire, water, or dangerous electrical situations
- Integrates with an emergency power-off (EPO) system.
- Supports contact closure and isolated 24-volt EPO interfaces.

Isolated Extension Cable



Part Number AP9825

Serial cable for network administrators to provide UPS communication over long distances in computer room and datacentre operations.

UPS monitoring from extended distances

The Isolated Extension Cable (IEC) is designed to provide secure monitoring through a serial connection of an APC UPS for extended distances up to 330' (100m). The cable is specifically developed to eliminate ground loops and other noise that inhibits proper monitoring and management of the UPS. The IEC also reaches servers that are physically located in other parts of an office environment that standard monitoring cabling is not able to reach. The IEC provides protection from electrical anomalies and disturbances to UPS communications that can often inhibit proper monitoring and management.

Features include:

- Monitor UPS from distances up to 330' (100m).
- Elimination of ground loop noises makes for clearer signals and no drainage to equipment.
- Reaches servers located in other areas of the office.

Power Control and Distribution: MasterSwitch™ Series

Remote power distribution units for network administrators, Co-Locations, ISPs, and applications where remote control of outlets is required.

The MasterSwitch Series provides a variety of solutions for an array of applications that exist in the technology industry. While every product in the series has the base functionality to allow for remote rebooting or power control of attached equipment, each new addition to the series provides added features targeted to specific markets and needs. These markets include server farms, datacentres, branch offices, ISPs, and Co-Locations including many other applications. Issues that can be resolved through use of the MasterSwitch range from remotely rebooting individual devices to maximising runtime based on power anomalies, toggling power based on environmental anomalies, and monitoring current.

APC MasterSwitch units share the following features:

Reboot network equipment

MasterSwitch eases the burden of managing remote sites and maximises the uptime of servers and internetworking equipment.

MasterSwitch offers 8 relay-controlled outlets. Each outlet offers independent switching of power to a connected load, which allows remote power control without affecting other attached equipment.

Managing a remote site by using a field technician to reboot a locked-up server can negatively impact a company's bottom line. MasterSwitch eliminates such visits for more cost-effective network management via remote access.

MasterSwitch features embedded Web-based management

An intuitive, low-bandwidth graphical user interface (GUI) is available and can be accessed by any Web browser. Security for this interface follows the HTTP 1.0 password standard. Additionally, for enhanced security, MD-5 authentication is a built-in option of any MasterSwitch. The interface also lets the user set links to the connected equipment, other managed devices, or to APC's Web site and on-line customer support.

Manageability via:

- Web
- Telnet
- SNMP

MasterSwitch provides easy installation

To make installation as simple as possible, MasterSwitch can be configured over the network or through a local terminal program by utilising APC's Web Wizard software. This allows the MasterSwitch to be controlled through a remote terminal session. BOOTP is included for automatic IP address assignment. If BOOTP is not available on the user's network, the device's IP address can be assigned via the serial interface. Simply use a Web browser, an SNMP management system, or a terminal program to control power to your connected devices.

Individual Outlet Control

MasterSwitch provides power solutions for co-locators (COLOs) and Internet Service Providers (ISPs). COLOs and ISPs can take control of their businesses by giving control back to their customers. This is done by administrators assigning individual or multiple outlet control to user accounts. Customers then have the ability to control their equipment's power without on-site intervention.

MasterSwitch™

Remote on/off and reboot

MasterSwitch (AP9211/AP9212) is a power distribution unit that targets server farms, datacentres, and branch office locations. The primary function of this device is for simple on, off, reboot control of remote equipment. The MasterSwitch includes all of the following features. Flash upgrade capabilities of the firmware via the Internet so future enhancements can easily be installed in the field. MD-5 security adds extra protection against unauthorised access by requiring an authentication phrase to be utilized. Each MasterSwitch includes the standard APC web interface so that it is easy to use with all other APC web enabled devices. The MasterSwitch has a Universal Power Supply that allows it to be used from 90V to 250V applications depending on the outlet requirement. APC offers both NEMA 5-15 (AP9211) and IEC 320 (AP9212) outlet equipped units.

Part Number AP9211
(NEMA 5-15 outlets, 15A unit at 120V)

Part Number AP9212 (shown)
(IEC 320 C-13 outlets, 15A unit at 120V or 12A unit at 208V or 230V)

Both units utilize Universal power supplies



MasterSwitch™ Power Receptacles

High amperage load switching

APC MasterSwitch Power Receptacles increase the maximum load controlled by a MasterSwitch unit by allowing for loads to be shifted from the MasterSwitch to a separate branch circuit. The variety of Power Receptacles addresses different amperage (15A, 20A, 30A) and voltage (100V, 120V, 208V, 230V) needs. The Power Receptacles have the same dimensions to allow for custom configurations of up to three various Power Receptacle units per Power Receptacle Tray (AP9510BAY).



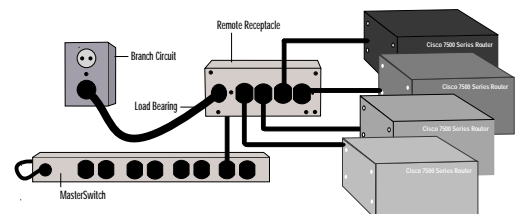
Part Number AP9510320 (IEC C13 output, C14 input, 12A at 250V or 12A at 208V) - shown

Part Number AP9510515 (NEMA 5-15 output, 15A input at 120V)

Part Number AP9510520 (NEMA 5-15/5-20 output, 20A input at 120V)

Part Number AP9510L630 (L630 output, 30A input at 208V)

Illustration depicts two Cisco routers connected to and managed via an APC remote receptacle.



MasterSwitch™ VM

Current Monitoring

MasterSwitch Vertical Mount (VM) current monitoring capabilities allow you to ensure that the unit is not overloaded, all but eliminating the possibility of your load being dropped. Audible, visible and network alarms based on user-definable thresholds keep the user informed of possible problems.

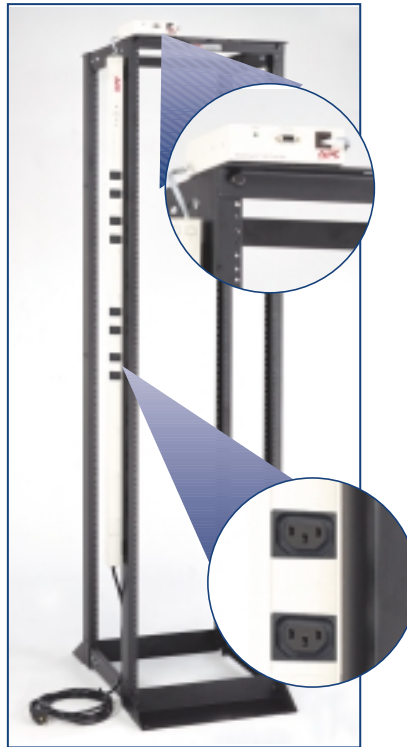
Takes up zero 'U' space

MasterSwitch VM is a zero 'U' device with many user-friendly features. These include eight outlets (8 always on), 16A hard wire capability, rack-mount brackets, and (LCD) alerts based on user definable thresholds. The VM is cascadable with up to 3 additional expansion chassis which allow for 32 outlets to be controlled via one IP address.

Controllable Outlets

MasterSwitch VM provides remote connectivity and management of power to connected devices with a zero 'U' chassis designed to optimize rack environments. ISPs and Co-Location managers will find MasterSwitch VM to be a convenient tool for managing power to networking (servers) and internetworking (routers, hubs or switches) equipment from anywhere remote network connectivity is possible.

Note: The AP9222 and AP9221 ships with a control unit that has optional rack mounting ears. If these ears are used, 1U of rack space is required.



Part Number AP9222 (IEC C13 output, C19 input at 208/230V)

Part Number AP9222EXP (expansion unit)

Part Number AP9221 (NEMA 5-15 output, 20A input at 100/120V)

Part Number AP9221EXP (expansion unit)

Safety and Reliability

Control UPS power output

Wherever you use an APC UPS, you can use MasterSwitch to power down connected equipment on an outlet-by-outlet basis to conserve battery back-up power.

Web SNMP, Telnet control

Seamless integration into Web-based management strategies. The first power-switching device featuring embedded Web management.

SNMP control

Network manageable by SNMP to integrate with native SNMP management platforms.

Built-in serial port

Serial interface for out-of-band or off-line configuration and diagnostics.

Eight channels of manageable power

Eight independent power outlets for complete and flexible management of connected equipment. MasterSwitch can be used with or without a UPS.

LED status check

Front panel LEDs provide a quick status check of powered loads.

Certified for safety

The MasterSwitch is certified by CE, CSA, FCC, UL, and verified by VDE.

Power Distribution Units (PDUs)

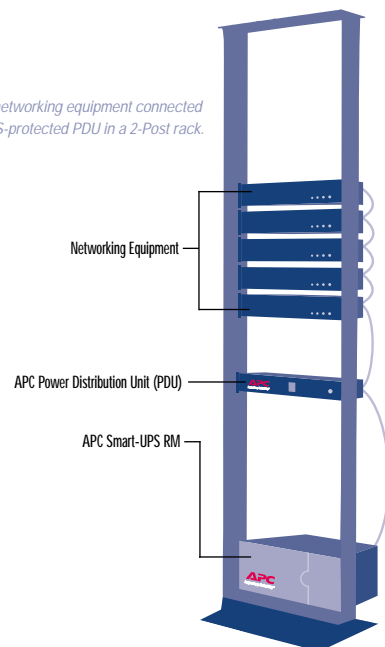
Rack-mountable

APC now offers a power strip that allow users to distribute power throughout an enclosure. Whether the enclosure is located in a large datacentre or a small branch office, power must be distributed to a variety of equipment. The AP9553, which is a 16A PDU with a detached power cord with IEC 320 C19 and C20 inputs and eleven (11) IEC 320 C13 output receptacles. This unit is mounted horizontally needing only 1U space in a rack environment.



Part Number AP9553

Illustration depicts networking equipment connected to a UPS-protected PDU in a 2-Post rack.





NetShelter Enclosures

Protecting today's network environment from power and environmental variables is essential to ensuring high system reliability and availability. To maximise availability, the level of physical protection, organisation, security, flexibility and ease of use should be considered. APC's NetShelter enclosure solutions provide one-stop shopping to meet the needs of rack-mount server and internetworking equipment.

APC now offers Network Administrators two choices of enclosure products – the NetShelter Premium and the NetShelter Standard enclosures. These high quality enclosures provide a secure, flexible and manageable 4-post environment that makes rack-mounting equipment simple and easy. Both types of enclosures ship fully assembled under one part number. Every base enclosure ships standard with a front door, rear door, side panels, roof, casters, levelling feet, mounting rails and equipment mounting hardware all pre-assembled for customer convenience. NetShelter's front and rear doors, along with the side panels, are lockable providing a safe and secure environment. What's more, equipment-mounting rails are fully adjustable to allow for a variety of equipment to be mounted in either NetShelter model.

The NetShelter Premium enclosure is a fully functional, high-end enclosure that ships loaded with standard features and options. Designed for heavier loads and complex configurations, the NetShelter Premium enclosure provides the ultimate environmental protection solution.

For those rack-mount environments that require a simple and cost effective solution, the NetShelter Standard enclosure is the best choice for rack-mounting equipment. The Standard enclosure is a basic, economically priced enclosure that meets the needs of customers with tight budget constraints.



Standard Enclosure

Premium Enclosures

High-Density Enclosure

• **NetShelter Premium Enclosure**

A premium enclosure for network administrators providing the ultimate solution for organisation, security, flexibility, and protection of networking equipment in a datacentre environment.

The NetShelter Premium Enclosure is designed for robust server and networking environments that require a high quality, feature rich enclosure solution. The NetShelter Premium Enclosure is a free standing enclosure that saves floor space, organises equipment, eliminates cabling “rat’s nests” and physically protects your investment. The NetShelter Premium Enclosure is designed specifically for industry standard (EIA-310-D) 19” rack-mount equipment. Each enclosure provides a generous 2000 lbs (909 kg) equipment weight rating which meets even the most complex configuration requirements. Each NetShelter Premium Enclosure is powder-coated in a computer beige/dark grey combination providing an attractive and durable finish. The NetShelter Premium Enclosure is offered in two sizes. A 42U version is designed for the typical datacentre application where a large quantity of equipment needs to be rack-mounted into a single enclosure. A 22U version is designed for branch office locations where space is restricted or where the configuration does not require a full size 42U enclosure. The 42U enclosure provides 73.5” (1867mm) of equipment mounting space yet has an overall height of only 81.5” (2070mm). The 22U enclosure provides 38.5” (978mm) of equipment mounting space and an overall height of 46” (1168mm). Both sizes use the same NetShelter Enclosure Accessories.

The NetShelter Premium series features simple and quick enclosure selection, installation and equipment access. There’s no need to spend hours selecting from dozens of rack configurations because APC has made it easy for you by handling the details and providing a complete enclosure solution right out of the box. The NetShelter Premium Enclosure requires no assembly and rolls through a standard 7 foot office door on its integrated heavy duty casters – there’s no tipping required. The NetShelter Premium Enclosure is designed with many standard features that make the enclosure user-friendly. For example, each enclosure has vertical posts designed with mounting holes along the entire height, allowing for 1U devices to be “zero U mounted” in the side channel. In addition, the vertical posts are hollow and provide a means for routing and storing cables. Mounting holes are provided in the roof frame to allow the optional fan tray to be mounted in a “zero U” position. The front and rear doors have integrated mounting posts to ensure proper placement of APC’s optional Door Alarm Switch Kit. The Door Alarm Switch Kit adds a level of security by providing an alarm whenever the doors are breached (when used in conjunction with APC’s Environmental Monitoring Card).

APC’s AR1000A is the 42U Base enclosure, designed for standalone applications. The AR1001A is the 42U Expansion enclosure designed for use in a lineup of NetShelter Premium enclosures. Costing less than the AR1000A Base enclosure, the AR1001A ships with the baying and trim hardware preinstalled and without side panels. When configuring a multi-bay lineup, customers should order one AR1000A base enclosure to start the configuration. Then for the remaining configuration, the AR1001A expansion enclosure(s) should be ordered to accommodate the additional network devices. Once the installation is complete and all units are bayed together, the original side panels (from the AR1000A) are used at each end of the lineup to fully enclose the rack-mounted equipment (see illustration on cover of brochure).

APC’s award-winning Smart-UPS and Symmetra UPSs, power management software, and environmental monitoring accessories combine with the NetShelter enclosure to form an integrated solution ideal for a variety of rack-mount network configurations.

Features include:

- 42U (73.5"-1867mm) storage height for 19" equipment
- 22U (38.5" - 1978mm) storage height for 19" equipment
- Fits through a standard 7' office door
- Ventilated doors and roof
- Tinted tempered safety glass front door
- Quick release front and rear doors with locks
- Quick release side panels with lock
- Common key for doors and side panels
- Doors are reversible
- Front and rear doors open 180°
- Integrated stabilising feet on 42U (detachable)
- Integrated stabilising plate on 22U (detachable)
- Adjustable levelling feet
- Heavy-duty casters
- Static load capacity=2000 lbs (909 kg)
- Adjustable bottom cable access
- Adjustable vertical mounting rails
- User-friendly rooftop cable access
- Ships fully assembled
- Enhanced cable management
- 60 sets of equipment mounting hardware, 3 Cable Management Hoops, caged nut tool, hex head wrench and levelling foot wrench are included with each Premium Enclosure
- 5-year warranty



Part Number AR1000A



Part Number AR1001A



Part Number AR1100A

• **NetShelter High-Density Premium Enclosure**

A premium enclosure for network administrators providing organisation, flexibility, protection, and maximum ventilation for high-density configurations.

APC provides a fully-perforated front/rear door option to maximise air flow. The 42U Base and Expansion enclosures are now available with a fully perforated design replacing the standard front glass door. These enclosures provide increased ventilation, especially for data-centre environments with tightly integrated equipment.



• **NetShelter Configurator**

Comprehensive on-line solution which assists customers in creating a highly-available rack-mount environment.

NetShelter Configurator software allows you to configure your network equipment online and simplifies organising and configuring your rack-mount equipment. The application provides a printable picture of your configuration; printable reports on configuration validation, site plan, ordering information and configuration layout. The Configurator application also provides an extensive list of 3rd party networking equipment; and built-in logic that helps ensure your configuration is valid.

Features include:

- Assists in configuring all APC rack-mountable products.
- Lists many major server and internetworking manufacturers products.
- Gives the option to create and save components that were not previously available.
- Provides detailed reports of your configuration.
- Downloadable for free on the web



NetShelter Configurator screen shot

• NetShelter Standard Enclosure

A basic enclosure solution for networking administrators providing a simple solution for organisation, security, flexibility and protection of networking equipment in a datacentre environment.

The NetShelter Standard Enclosure is a high quality, free standing enclosure that saves floor space, organises equipment, eliminates cabling "rat's nests" and physically protects your investment. Each Standard Enclosure is designed specifically for industry standard (EIA-310-D) 19" rack-mount equipment and is offered in a 40U version providing 70" (1778mm) of equipment mounting space. With an overall height of 76" (1930mm) the enclosure will easily fit through 6.5' (2m) high doorway. What's more, the NetShelter Standard Enclosure provides an equipment weight rating of 1,000 lbs (455kg) - more than enough capacity for simple configurations. The NetShelter Standard Enclosure is powder coated in computer beige for an attractive yet durable finish.

The NetShelter Standard Enclosure features simple and quick enclosure selection, installation and equipment access. There's no need to spend hours selecting from dozens of rack configurations because APC has made it easy for you by handling the details and provides a complete enclosure solution right out of the box. The Standard Enclosure requires no assembly and rolls through most office doors on its integrated casters – once again, there's no tipping required.

Moreover, expansion units are not required for the NetShelter Standard as baying hardware is provided with each unit. Baying multiple NetShelter Standard Enclosures together is quick and simple. When configuring a multibay unit lineup, the side panels are removed from each Standard enclosure, and then the units are rolled and bolted together using the hardware provided with each enclosure. Finally, two side panels are attached at each end to provide a secure enclosure lineup.

—Features include:—

- 40U or 70" (1778mm) of storage height for 19" equipment
- Fits through 2 meter doorways
- Ventilated doors and roof
- Tinted tempered safety glass front door
- Quick release front and rear doors with locks
- Quick release side panels with lock
- Common key for doors and side panels
- Doors are reversible
- Front and rear doors open 180°
- Mounting provisions for stabilising plate kit
- Adjustable levelling feet
- Casters
- Static load rating of 1000 lbs (455 kg)
- Adjustable vertical mounting rails
- Baying hardware included with each unit
- Rooftop cable access
- Ships fully assembled
- 30 sets of equipment mounting hardware, caged nut tool, hex head wrench and levelling foot wrench
- 2 year warranty



Part Number AR500

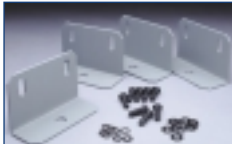
NetShelter Enclosure Accessories



Part Number AR8111



Part Number AR8115



Part Number AR8112



Part Number AP9513



Part Number AR8105



Part Number AR8122



Part Number AR8123



Part Number AR8128 (with cable management arm Part Number AR8129, ordered separately.)



Part Number AR8113

Stabilising Plate Kit - NetShelter Premium

APC offers a stabilising plate kit for increased flexibility and support. These kits consist of one front-mounted plate and two side-mounted plates that easily attach to the NetShelter Premium Enclosure. These grey, powder coated plates may also be bolted to the floor for increased stability and security. (Not available for NetShelter Standard)

Stabilising Plate - NetShelter Standard

This stabilising plate (qty. 1) can be easily attached the front or rear of the NetShelter Standard enclosure providing a high level of stability. For increase stability and security, the plate may also be bolted to the floor. The plate is powder coated beige to match the NetShelter Standard color.

Bolt-down Brackets Kit

Bolt-down brackets kits offer protection and stability for the NetShelter enclosure and connected equipment. The brackets may be attached to the exterior of the Premium or Standard enclosure for better stability or to the interior of the Premium Enclosure for an added level of security. These grey, powder coated brackets must be bolted to the floor to serve as stabilisation.

Door Alarm Switch Kit

The Door Alarm Switch Kit is designed to monitor and notify users (when used in conjunction with the Environmental Monitoring Card AP9612TH) if the NetShelter Premium door has been breached. Moreover, the NetShelter Premium Enclosure provides integrated mounting posts to ensure easy and accurate mounting of the door sensors. Kit includes two door sensors to monitor both front and rear doors. (Not available for NetShelter Standard)

Monitor Shelf

The Monitor Shelf is an all-purpose two-post mounted shelf designed for lighter equipment. The beige shelf is ventilated to allow airflow and is rated for a maximum load of 50 lbs (23 kg). It is ideal for small monitors, modems, and other light equipment and has a depth of 16" (41 cm).

Fixed Shelf

The Fixed Shelf is a four-post mounted shelf that supports heavier equipment which does not need to be withdrawn from the enclosure. The beige ventilated 1U shelf measures 17.2" wide x 26" deep (44cm x 66cm) and has a maximum weight capacity of 250 lbs (114 kg). The mounting rails are adjustable from 28" (71cm) to 32.75" (83 cm) in depth.

Standard Duty Sliding Shelf

The Standard Duty Sliding Shelf is a 1U ventilated sliding shelf designed for lighter non-rack-mount equipment that needs to be withdrawn from the enclosure. The beige shelf measures 16.6" wide x 28.4" deep (42cm x 72cm) and has a maximum weight rating of 100 lbs (45kg). The mounting rails are adjustable from 27.5" (70cm) to 32.25" (81.9cm) in depth. Friction pads are provided for customers to apply in the field to prevent equipment slippage. Mounting provisions are provided for APC's Cable Management Arm (p/n AR8129).

Heavy Duty Sliding Shelves

The Heavy Duty Sliding Shelf is a 1U sliding shelf designed for heavier non-rack-mount equipment that needs to be withdrawn from the enclosure. The beige shelf measures 17" wide x 28" deep (42cm x 71cm), and has an increased maximum weight rating of 185 lbs (84kg). The mounting rails are adjustable from 28" (71cm) to 32" (81cm) in depth. Four adjustable retaining clips are provided to hold equipment firmly in place. Mounting provisions are provided for APC's Cable Management Arm (p/n AR8129)

Cable Management Hoop Kit

Cable hoops are an integral part of helping to organise cable clutter and eliminate "rat's nests" within the NetShelter enclosure. Six hoops are included per kit. Each Premium NetShelter Enclosure ships standard with three Cable Management Hoops. (Not available for NetShelter Standard)

NetShelter Enclosure Accessories



Part Number AR8114

Cable Management Tray Kit

The Cable Management Tray Kit ships with qty 2 Trays that provide enhanced cable management within the NetShelter enclosure. Measuring 69" high x 3" wide (175cm x 7.6cm) the Cable Management Tray can be mounted in the side of the NetShelter enclosure. Qty. 10 Velcro straps are provided to assist in routing cables.



Part Number AR8129

Cable Management Arm

APC's Cable Management Arm is a 1U hinged device that allows users to attach cables and power cords so that they remain fixed and out of the way of APC's Sliding Shelves (p/n AR8123 and p/n AR8128), the 19" Rotating Keyboard Drawer (p/n AR8127), and the 17" Keyboard Drawer (p/n AR8126).



Part Number AR8210-120V
Part Number AR8211-220V

Fan Tray Kit

For increased ventilation of your network equipment, roof-mounted fan trays are available in 120V or 220V versions. Each tray contains four fans (rated 110 cfm each) and easily mounts in the roof of the NetShelter Enclosure taking up zero "U" space.



Part Number AR8000

Compaq Mounting Rails

Consists of four (4) pairs of rails for mounting some Compaq ProLiant servers, storage systems, and some Compaq accessories. For more details, see the NetShelter Server Compatibility chart on APC's Web site.



Part Number AR8001

HP NetServer Mounting Rails

Consists of one (1) pair of mounting rails to mount some HP NetServers. Appropriate HP rack-mount kit may also be required. For more details, see the NetShelter Server Compatibility chart on APC's Web site.



Part Number AR8002, AR8003, AR8004

Dell PowerEdge Mounting Rails

These kits consist of mounting hardware required for installing Dell's PowerEdge servers into the NetShelter enclosures. For the 4350 or 6350 server, use APC p/n AR8002. For the 4300 or 6300 server, use APC p/n AR8003. For the 2400 or 2450 Server, use APC p/n AR8004. APC's Cable Management Arm (APC p/n AR8129) is included in AR8002 and AR8003 kits. AR8002, AR8003, and AR8004 also require the Dell provided rack-mount kit. However, when mounting the Dell 2450 server, the Dell provided kit is NOT required. (See Compatibility Chart for further details)



Part Number AR8127

19" Rotating Keyboard Drawer

Utilising 2U of rack space, the 19" beige rotating keyboard drawer provides users with a hassle-free way to use a standard 19" keyboard in any standard EIA-310-D 19" rack. A foam wrist rest and mousepad are included in the drawer. Cable management clips and mounting provisions for APC's Cable Management Arm (p/n AR8129) are also provided. (keyboard not included)



Part Number AR8126

17" Keyboard Drawer

This 1U, low profile, beige keyboard drawer will house standard 17" keyboards. The 4-Post mounted rails are adjustable in depths from 27.6" (70cm) to 32.8" (83cm) and allow a 1U device to be mounted behind the keyboard tray without interfering with its operation. A foam wrist rest and mounting provisions for APC's Cable Management Arm (p/n AR8129) are provided. (keyboard not included)



Part Number AR8101

Blanking Panel Kit

This kit contains one each of the following: 1U panel, 2U panel, 4U panel, and 8U panel. Blanking panels hide unused enclosure space, improve aesthetics, and are essential for proper airflow in the enclosure. The panels are powder coated in a beige color for an attractive finish.



Part Number AR8100

Hardware Kit

This kit contains 32 sets of caged nuts, nylon cup washer, and combination slot/Phillips screw for use in addition to the hardware already provided with each NetShelter enclosure.

NetShelter Rack Accessories



Part Number AR8402

2U Blanking Panel

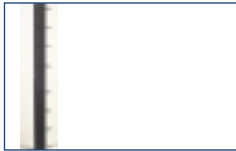
The 2U Blanking Panel adds a finished look to your configuration by covering up blank spaces. The black 2U Panel is made from 16 gauge steel and ships with mounting hardware



Part Number AR8400

Hardware Kit

Each 2-Post Rack ships with a standard quantity 24 black #12-24 x 0.5" pilot point equipment mounting screws. For those configurations that require additional screws the Hardware Kit provides an additional 100 screws.



Part Number AR8440-3"
Part Number AR8441-6"

Vertical Cable Organisers

Vertical Cable Organisers mount to either side of the 2-Post rack and provide vertical cable management for the entire height of the rack. The 3" version (p/n AR8440) is typically used with a single rack or at the end of lineup of racks. The 6" version (p/n AR8441) is typically used between two configured racks. Each black organiser comes standard with seven integrated hoops and seven pass through holes.



Part Number AR8445-3"
Part Number AR8446-6"

Vertical Organiser Control Brackets

Vertical Organiser Control Brackets are used in conjunction with the Vertical Cable Organisers to provide cable containment in the rear of the organisers. Each black control bracket easily attaches directly to the mounting holes on the 2-Post Rack. The 3" version (p/n AR8445) is used with the 3" wide Vertical Organiser at the end of rack. The 6" version (p/n AR8446) is used with the 6" wide Vertical Organiser mounted between two configured racks.



Part Number AR827

2U Patch Cord Organiser

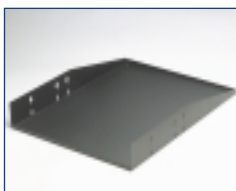
The Patch Cord Organiser provides excellent horizontal and vertical cable management and helps simplify the routing of patch cords. Each black organiser has four integrated cable hoops for horizontal routing and 24 cable hoops for vertical routing.



Part Number AR8425-1U
Part Number AR8426-2U

Horizontal Cable Organisers

Horizontal Cable Organisers are ideal for routing cables in a rack or between racks in a multi-unit lineup. Two sizes are available to meet application requirements: p/n AR8425 = 1U and p/n AR8426 = 2U. Each black organiser provides four integrated cable hoops.



Part Number AR8421

Heavy Duty Shelf

The heavy-duty shelf is designed to support heavier weight requirements of equipment rated up to 150 lbs (68 kg). There are three different types of mounting positions for the shelf providing a flexible solution to users in choosing how the equipment is mounted in the rack. The shelf has a 17" (43.2cm) depth and is painted black.



Part Number AR8420

Light Duty Shelf

The Light Duty Shelf is an all purpose shelf designed to handle equipment rated up to 50 lbs (22.7 kg). The shelf has a 14" (35.6cm) depth making it ideal for small monitors, modems or other light weight networking equipment. The shelf is painted black and uses a front mounted design.

KVM Switch and Cables



Part Number AP9254 (4 port KVM switch)
Part Number AP9258 (8 port KVM switch)
Part Number AP9850 (10foot/305 cm Cable Set)
Part Number AP9851 (25 foot/762 cm Cable Set)

A management switch that allows administrators to control multiple servers using a single keyboard, monitor and mouse in a rack, computer room, or datacentre environment.

Keyboard, Video, Mouse (KVM) switches are used in applications where there are multiple computers that do not require constant interaction from an administrator, but need to be accessed on a routine basis. Without an APC KVM switch, a dedicated keyboard, monitor, and mouse are required to operate each computer even though a user can only work on one system at a time.* By attaching all computers to a KVM switch, the administrator can eliminate unused keyboards, monitors and mice, while organising precious workspace to be more efficient and productive. By allowing one centralised point of control for up to 64 servers, APC KVM switches provide a solution which increases the availability and manageability of the server environment.

Features include:

- An APC KVM Switch unit will support from one (1) to eight (8) attached computers, or channels. If more than eight channels are needed, multiple units can be cascaded together for expansion. Up to two (2) tiers of units can be connected for a maximum of sixty-four (64) attached computers in one system.
- Configure and control your APC KVM Switch with the on-screen display (OSD). Name your computer channels and then select the desired computer from an easy-to-use menu.
- In addition to using the on-screen display, you can switch computer channels in one of three easy ways: via the APC KVM Switch channel push buttons; with the scan button; or with a simple keyboard sequence.
- Advanced bi-level security allows the administrator to set viewing and editing capabilities.
- The OSD Configuration Utility allows the administrator to easily configure and download a channel list—with defined users and access privileges—to the entire system.
- Scanning capabilities include a built-in scanning feature which allows you to automatically monitor or scan your computers without intervention.
- Hot-pluggable operation—add additional servers without having to power off the switch or servers which are already attached.
- “Keep alive” feature allows attached servers to power the unit in the event of switch failure, preventing attached computers from locking up and preventing loss of time and data.
- Fits in 1U (1.75”) of space and includes rack-mounting hardware.
- Status scanning and channel LEDs take the guesswork out of system operation and diagnostics.

**Important note: APC offers cable kits to connect the KVM switch to each server: AP9850 (10 foot/3048 mm) cable set, AP9851 (25 foot/7620 mm) cable set.*

APC power and environmental accessories				
PART NO.	Specifications/Compliance	System/Power Requirements	Net/Shipping Weight (metric)	Shipping Dimensions : HxWxD (metric)
8-Port Interface Expander (Share-UPS)				
AP9207	2-year warranty. Approvals: FCC Class A, EN50082-1. Ports: 8 Basic monitoring ports with simple signalling (smart communication from UPS port) VDE/EN 55022 Class B	SmartSlot-equipped APC UPS, 1 per server Advanced port: Smart signalling with APC PowerChute <i>plus</i> Basic port: Simple signalling. APC PowerChute <i>plus</i> recommended or embedded O/S shutdown/signalling cable	3.5 lb. (1.6 kg)/ 5.7 lb. (2.6 kg)	2.5x18x9 in. (6.4x45.7x22.9cm)
MasterSwitch				
AP9212	Approvals: FCC Class B, EN50022, EN50082-1,	10Base-T Network, IEC 320 C-13	9.5 lb. (3600g/4.3kg)	68x6.25x3.625 in.
AP9222	2-year warranty; Approvals: FCC Part 15 Class A UL listed, VCCI	IEC C13 output, C19 input at 208/230V	Controller: 1.69 lb./4.53 lb. Strip: 8.5 lb./12 lb.	
AP9222EXP	2-year warranty; Approvals: FCC Part 15 Class A UL listed, VCCI		8.5 lb./12 lb.	
AP95103202	2-year warranty. EN 60950, VDE	IEC C-13/C-14	4 lb. (1.8 kg)/4.8 lb. (2.2 kg)	
AP9510BAY	2-year warranty		7 lb. (3.2 kg)/8 lb. (3.6 kg)	5x19.5x6 in. (12.7x49.5x15.2cm)
Power Distribution Units				
AP9553	2-year warranty. Approvals: CE, VDE, EN 60950 UL 1950, UL listed	IEC 320, C19 and C20	4.7 lb. (2.1kg)/6.2 lb. (2.8kg)	2.75x18.5x13.5 in. (7x47x34.3cm)
PowerView				
AP9215	2-year warranty Approvals: FCC verified	3 meter cable (Note: Disconnecting the cable from the display does not interrupt communications between the server and the UPS.) Compatible with APC Smart-UPS, Matrix-UPS* and Symmetra™ Power Array™	1.9 lb. (860g)/2 lb. (960g)	2.5x9.625x7 in. (6.4x24.4x17.8cm)
Expansion Chassis				
AP9600	2-year warranty. Approvals - FCC Class B, EN50022, EN50082-1	Available communication port found on Smart-UPS, Matrix-UPS or Symmetra	2 lb. (.9 kg) / 2.5 lb. (1.1kg)	3.125x9.25x5.625in. (7.9x23.5x14.3cm)
Triple Expansion Chassis				
AP9604	2-year warranty	Available communication port found Approvals: FCC Class B, EN50022, EN50082-1, 3 card support	4.2 lb. (1.9kg)/5.3 lb. (2.4kg) on Smart-UPS, Matrix-UPS or Symmetra	2.5x18x9.75 in. (6.4x45.7x24.8cm)
Web/SNMP Management Card				
AP9606	2-year warranty. Approvals: FCC Class A, CISPR-A 10Base-T (UTP/RJ45) Ethernet Media support	SmartSlot-equipped APC UPS or AP9604 10Base-T Network	0.3 lb. (0.9kg)/2 lb. (0.9kg)	2.86x9x6.5 in. (7.3x22.9x16.5cm)
2-Port Interface Expander Card				
AP9607	2-year warranty Approvals: FCC Class B, EN50022, EN50082-1 Ports: 2 basic monitoring ports with simple signalling (smart communication from UPS port)	SmartSlot-equipped APC UPS Advanced port: Smart signalling with APC PowerChute <i>plus</i> Basic port: Simple signalling. APC PowerChute <i>plus</i> recommended or embedded O/S shutdown/signalling cable	0.3 lb. (0.1kg)/1 lb. (0.5kg)	2.86x9x6.5 in. (7.3x22.9x16.5cm)
Out-of-Band Management Card				
AP9608	2-year warranty Approvals: FCC Class B, EN50022, EN50082-1	SmartSlot-equipped APC UPS, User-supplied dedicated modem of at least 1200 baud (Phone line can be shared with existing system connection)	0.3 lb. (0.1kg)/1 lb. (0.5kg)	2.86x9x6.5 in. (7.3x22.9x16.5cm)
Relay I/O Card				
AP9610	2-year warranty. Approvals: FCC Class B, EN50022 Class B, EN50082-1 verified, DOC Class B	SmartSlot-equipped APC UPS or AP9604	0.3 lb. (0.1kg)/1 lb. (0.5kg)	2.86x9x6.5 in. (7.3x22.9x16.5cm)
Environmental Monitoring Card				
AP9612TH	2-year warranty. Approvals: FCC Class A, EN50082-1 Temp. measurement range: 0°C to 65°C (32°F to 149°F) Temp. measurement accuracy: +/- 2°C at 0-40°C 4 dry-closure contact zones, configure for normal open or closed Humid. Measurement range: 10% to 90% RH Humid. Measurement accuracy: +/- 8% of full scale for 15°C to 35°C	SmartSlot-equipped APC UPS, PowerChute <i>plus</i> (v 4.0 and up), PowerNet Adapter/ Agents, Call-UPS II or PowerView	0.3 lb. (0.1kg)/1 lb. (0.5kg)	2.86x9x6.5 in. (7.3x22.9x16.5cm)
5-Port 10Base-T Hub				
AP9615	2-year warranty. Approvals: FCC Part 15 Class B EN55022. (CISPR) Class B, VCCI Class 2, IEC801-2,3,4, CE, C-Tick.	Input voltage range 18-30 VDC EN55022. (CISPR) Class B, VCCI Class 2, IEC SmartSlot-equipped APC UPS or AP9604	0.3 lb. (0.1 kg)/0.7 lb. (0.3kg) Maximum current draw 30 mA	2.5 x 9.75 x 6.75 in. (6.4 x 24.8 x 17.1 cm)
Isolated Serial Extension Cable				
AP9825	2-year warranty 15 meter standard—up to 100 meter	Smart-UPS, Matrix-UPS and Symmetra— Available outlet for wall block at server end.	1 lb. (450g)/1.5 lb. (680g)	5x11x10.5 in. (12.7x27.9x25.4cm)
Remote Power-off Device				
AP9830	2-year warranty	Smart-UPS, Matrix-UPS and Symmetra— User-supplied switch. N.O./N.C. switch compatible	1 lb. (450g)/1.5 lb. (680g)	2.86x9x6.5 in. (10.2x10.2x3.8cm)

NetShelter enclosures and accessories specifications			
Part Number	Description	Shipping weight	Ship dimensions (H x W x D)
AR1000A	NetShelter Premium Base enclosure - 42U glass Door	384lbs. (175kg)	87x30x46" (221x76x117cm)
AR1000HD	NetShelter Premium Base enclosure - 42U fully vented Door	377lbs. (171kg)	87x30x46" (221x76x117cm)
AR1001A	NetShelter Premium Expansion enclosure - 42U glass Door	319lbs. (145kg)	87x30x46" (221x76x117cm)
AR1001HD	NetShelter Premium Expansion enclosure - 42U fully vented Door	312lbs. (142kg)	87x30x46" (221x76x117cm)
AR1100A	NetShelter Premium Base enclosure - 22U glass Door	238lbs. (108kg)	53x30x46" (135x76x117cm)
AR500	NetShelter Standard enclosure - 40U glass Door	302lbs. (137kg)	81x30x46" (206x76x117cm)
AR8000	Compaq Mounting Rails - 4 sets	14.5lbs. (6.6kg)	3.0x6.0x31.0" (7.6x15.2x78.7cm)
AR8001	H-P Mounting Rails - 1 set	3.8lbs. (1.7kg)	3.0x30.5x6.0" (7.6x77.5x15.2cm)
AR8002	Dell Mounting Brackets for 4350/6350 - 1 set	4.7lbs. (2.1kg)	3.0x21.3x4.8" (7.6x54.0x12.1cm)
AR8003	Dell Mounting Brackets for 4300/4400/6300/6400 - 1 set	5.5lbs. (2.5kg)	3.0x21.3x4.8" (7.6x54.0x12.1cm)
AR8004	Dell Sliding Rail Kit for PowerEdge 2400/2450 - 1 set	11lbs. (4.9kg)	30.5x6x3" (77.4x15.2x7.6cm)
AR8100	Hardware Kit - 32 sets	1.0lbs. (0.5kg)	2.0x9.5x6.5" (5.1x24.1x16.5cm)
AR8101	Blanking Panel Kit - one each of 8U, 4U, 2U, 1U panel	7.5lbs. (3.4kg)	1.5x23.5x14.5" (3.8x59.7x36.8cm)
AR8105	Monitor Shelf - 50lbs (23kg)	9.4lbs. (4.3kg)	4.0x22.5x17.5" (10.2x57.2x44.5cm)
AR8111	Stabiliser plate kit - front and 2 side plates	62.0lbs. (28.2kg)	5.5x11.5x37.5" (14.0x29.2x95.3cm)
AR8112	Bolt down Bracket kit - 4 brackets	3.8lbs. (1.7kg)	3.5x6.5x5.0" (8.9x16.5x12.7cm)
AR8113	Cable management hoop kit - 6 hoops	1.2lbs. (0.5kg)	2.0x9.5x6.5" (5.1x24.1x16.5cm)
AR8114	Cable Management Tray Kit - 2 trays	30lbs. (13.62kg)	69.68x3.2x3.2" (1770x93.6x80.96cm)
AR8122	Fixed Shelf - 250lbs (114g)	22.0lbs. (10.0kg)	30.5x21.6x3.5" (77.5x54.9x8.9cm)
AR8123	Standard Duty Sliding Shelf - 100lbs (45kg)	26lbs. (11.8kg)	32x22x3.5" (81.2x55.8x8.9cm)
AR8126	17" Keyboard Drawer	13.6lbs. (6.2kg)	3.5x22.5x21.3" (8.9x57.2x54.0cm)
AR8127	19" Rotating Keyboard Drawer	36.5lbs. (16.6kg)	8.5x36.5x25.5" (21.6x92.7x64.8cm)
AR8128	Heavy Duty Sliding Shelf - 185lbs (84kg)	47.0lbs. (21.4kg)	8.5x36.5x25.5" (21.6x92.7x64.8cm)
AR8129	1U Cable Management Arm	1.2lbs. (0.5kg)	2.0x19.0x2.5" (5.1x48.3x6.4cm)
AR8205	Mounting brackets for Compaq KMM switch	1.2lbs. (0.5kg)	2.0x13.5x4.5" (5.1x34.3x11.4cm)
AR8210	Fan Tray - 120vac/60hz, 4 fans	15.5lbs. (7.0kg)	3.5x31.0x22.3" (8.9x78.7x56.5cm)
AR8211	Fan Tray - 220vac/50hz, 4 fans	16.0lbs. (7.3kg)	3.5x31.0x22.3" (8.9x78.7x56.5cm)
AP9513	Door Alarm Switch Kit	1.2lbs. (0.5kg)	2.0x9.5x6.5" (5.1x24.1x16.5cm)
AP9254	4 Port Keyboard, Video, Mouse (KVM) Switch	9.5lbs. (4.3kg)	18.5x10.5x3.5" (47.0x26.7x8.9cm)
AP9258	8 Port Keyboard, Video, Mouse (KVM) Switch	9.5lbs. (4.3kg)	18.5x10.5x3.5" (47.0x26.7x8.9cm)
AP9850	KVM Cable Set for one server - 3 m	1.7lbs. (0.8kg)	2.0x9.5x6.5" (5.1x24.1x16.5cm)
AP9851	KVM Cable Set for one server - 7,60 m	4.2lbs. (1.9kg)	19.0x13.5x2.5" (48.3x34.3x6.4cm)

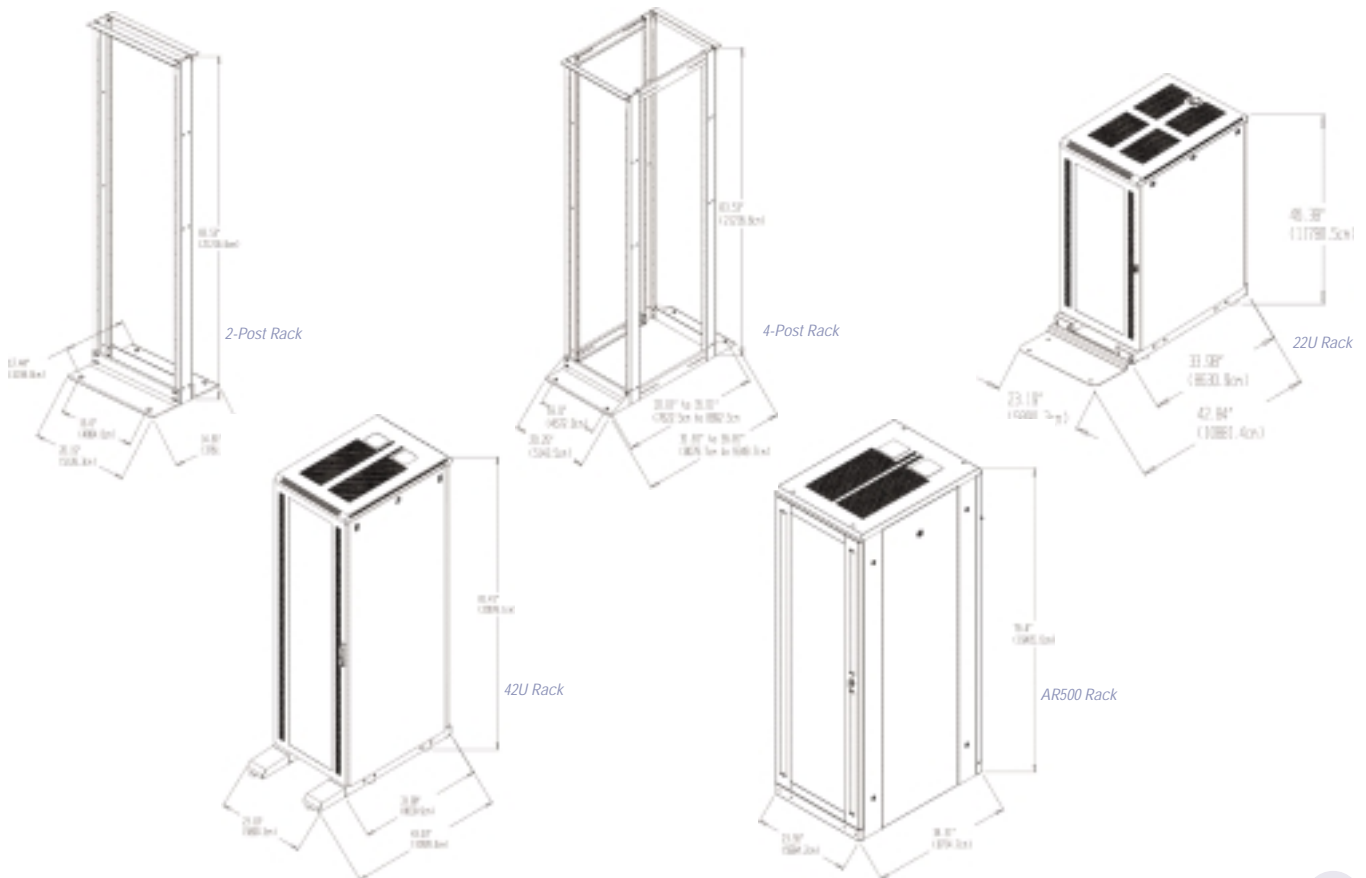
NetShelter Retired Part Numbers	
Old Part Number	New Part Number
AR1000	AR1000A
AR1001	AR1001A
AR1100	AR1100A
AR8102	AR8122
AR8103	AR8122
AR8104	AR8123
AR8106	AR8126
AR8124	AR8123

NetShelter rack and accessories specifications

Part Number	Description	Shipping weight	Ship dimensions (H x W x D)
AR200	2-Post Rack - Aluminum Finish	30 lbs. (13.6 kg)	86"x6.75"x4" (218.4x17.1x10.2cm)
AR201	2-Post Rack - Black Finish	30 lbs. (13.6 kg)	86"x6.75"x4" (218.4x17.1x10.2cm)
AR202	4-Post Open Frame - Black Finish	56 lbs. (25.5 kg)	86"x6.75"x5.38" (218.4x17.1x10.2cm)
AR8400	Hardware Kit - 100 sets	1 lb. (0.5kg)	3"x5"x1" (7.6x12.7x2.5cm)
AR8402	2U Blanking Panel	1.5 lbs. (0.7kg)	72"x4.25"x20" (5x10.8x50.8cm)
AR8420	Light Duty Shelf	8.5 lbs. (3.9kg)	21"x26"x7" (53.3x66x17.8cm)
AR8421	Heavy Duty Shelf	12.5 lbs. (5.7kg)	25"x29"x7" (63.5x73.7x17.8cm)
AR8425	1U Horizontal Cable Organiser	3 lbs. (1.4kg)	6"x27"x5" (15.2x68.6x12.7cm)
AR8426	2U Horizontal Cable Organiser	4.5 lbs. (2kg)	6"x27"x5" (15.2x68.6x12.7cm)
AR8427	2U Patch Cord Organisers	3.3 lbs. (1.5 kg)	6"x27"x5" (15.2x68.6x12.7cm)
AR8440	3" Vertical Cable Organiser	10.5 lbs. (4.8kg)	45"x4"x9" (114.3x10.2x22.9cm)
AR8441	6" Vertical Cable Organiser	14.5 lbs. (6.6kg)	45"x4"x9" (114.3x17.8x22.9cm)
AR8445	3" Vertical Organiser Control Bracket	0.9 lb. (0.4kg)	72"x4.25"x20" (5x10.8x50.8cm)
AR8446	6" Vertical Organiser Control Bracket	0.9 lb. (0.4kg)	72"x4.25"x20" (5x10.8x50.8cm)

Cabling

Product Name	Part Number	Description
NT/LAN server cable	940-0020	MS LAN Manager 2.0, 2.1. Artisoft LANtastic 4.0, DEC Pathworks for OS/2, IBM LAN Server 3.0, Windows NT 3.1, 3.5, 4.0, Acer/Altos OS, System 700 & 7000, Windows Apps, NetWare
Simple Signalling UNIX cable	AP9823	SCO Unix, IBM AIX, Solaris(SPARC), UnixWare, Solaris X86 (Intel), SunOS, NCR Unix, Olivetti Unix, SVR4, SINIX/RM, Unisys Unix, HP-UX
Extension Cable, 15'	AP9815	All UPS signalling cables extended 15 feet
Isolated extended cable, 50'	AP9825	Extends UPS signalling cables up to 100 meters
Smart Signalling UPS Link Cable	940-0024	Smart Signalling RS-232 communication cable (included with Smart-UPS, Matrix-UPS and Symmetra Power Array)
Interface for Banyan VINES	990-0004	VINES
Interface for AS/400	990-0006	OS/400 on 9402, 9404 & 9406 models (both 9 pin and 15 pin cables included)



Smart-UPS® RM and Smart-UPS® RMXL

Legendary reliable power protection

The ideal uninterruptible power supply (UPS) for rack-mounted file servers, hubs, routers, telecommunications systems and other mission-critical equipment within a NetShelter enclosure.

Smart-UPS RM's line-interactive design features:

- PowerChute® plus power-management software support for major network OSs (including Windows NT) and PowerNet support for SNMP-based management platforms.
- Automatically corrects under and over voltages without battery drain.
- Allows safe and easy replacement of batteries while the system stays up and running.
- Extends battery life with intelligent battery management.
- \$25,000 Lifetime Equipment Protection Policy (US and Canada only. See policy for details.)
- Line-interactive UPS power protection to control sags, surges, and spikes related to many power anomalies.



Part Number SU700RMNET, SU1000RMNET, SU1400RMNET,
SU2200RMNET, SU3000RM3U, SU1400RMXLNET,
SU2200RMXLNET, SU5000RMT5U

APC North America & Latin America

Corporate headquarters
132 Fairgrounds Road
West Kingston
RI 02892
Visit: www.apcc.com
E-mail: apcinfo@apcc.com
Call: (+1) 401-789-0204
Fax: (+1) 401-789-3710

APC Europe

APC Ireland
Ballybrit Business Park
Galway - Ireland
Call: +353 91 702000
Fax: +353 91 756909

APC Asia Pacific

APC Australia
Level 27 Northpoint
100 Miller Street
North Sydney - NSW 2060
Call: +61 2 9955 9366
Fax: +61 2 9955 2844

Balkans

Tel: (+36) 1 209 4678

Benelux

Tel: (+31) (0) 30 2425430

Central Africa

Tel: (+353) 91 702 287

Czech & Slovak Rep.

Tel: (+420) 2 4144 2404

Denmark

Tel: (+45) 70 27 01 58

East Africa

Tel: (+353) 91 702 287

Finland

Tel: (+358) 9 4392 1400

France

Tel: (+33) 1 41 90 52 00

Germany

Tel: (+49) 89 51417-0

Greece

Tel: (+30) 1 80 89 695

Hungary

Tel: (+36) 1 209 4678

Italy

Tel: (+39) 02 30018 1

Middle East

Tel: (+971) 4 3433 404

Moscow

Tel: (+7) 095 929 9095

North Africa

Tel: (+33) 1 41 90 5239

Norway

Tel: (+47) 2255 7101

Novosibirsk

Tel: (+7) 3832 320005

Poland

Tel: (+48) 22 666 0011

Portugal

Tel: (+35)121 44 14 607

South Africa

Tel: (+27) 11 465 5414

Spain

Tel: (+34) 91 761 6500

Sweden

Tel: (+46) 8 564 826 00

Turkey

Tel: (+90) 212 221 2171

UK

Tel: (+44) 20 8990 6400

Ukraine

Tel: (+380) 44 295 5292

West Africa

Tel: (+33) 1 41 90 5201

APC's quality system is certified by ISO 9002 standards



APC
Legendary Reliability™